

Pharmacy

Why study Pharmacy

Pharmacists and Pharmacologists are essential to healthcare in today's society both as scientists and health practitioners. Their knowledge and expertise in the pharmaceutical sciences ensure that health professionals use medicines to the maximum benefit in patient treatment and disease prevention.

Our excellence in research has been recognised by the award of the highest ranking of grade 5*A in the latest research assessment exercise in universities. The academic staff's innovative and enthusiastic approach to teaching has also been recognised through the Department scoring an excellent 23 points (max 24) in its subject review of teaching quality.

We have well-equipped teaching and research laboratories in a new building, along with a modern Clinical Pharmacy and Pharmacy Practice Learning Centre and computing suite for our own students' use.

The MPharm degree programme This is strongly based on the pharmaceutical sciences and prepares you for the increased clinical and advisory roles of the pharmacist.

Each semester consists of five units. In the first two years, all are core units, taken by everyone, but in the third and final years there is a wide choice of options, together with a research project. It is also possible in the final year for a placement overseas. Final year projects are linked to the research interests of the Department and you work alongside postgraduate researchers.

Pharmacy degree structure

	Clinical & Practice	Molecular & Cell Biology	Medicinal Chemistry	Pharmacology	Pharmaceutics
Year 1	Analytical & Learning Skills The Pharmacy Profession	Molecular & Cellular Biology	Medicinal Chemistry & Spectroscopy	Autonomic, Endocrine & Renal Systems	Biopharmaceutics & General Pharmacology
Year 2	Pharmacy Practice	Cellular & Molecular Therapeutics	Natural products, Drug Metabolism & Pharmacokinetics	Cardiovascular & Central Nervous Systems	Medicines Design & Pharmaceutical Microbiology
Year 3	Pharmacy Practice	Clinical Pharmacy Practical Option	Chemical Biology & Drug Design Dissertation	Infections & Immunity	Medicines Design
Final Year	Clinical Pharmacy & Advanced Clinical Pharmacy	Masters Project			
		Cancer	Option	Option	Option

“ I chose the University of Bath to study pharmacy because I liked the fact that the lecturers that teach you the course are the very same people that do research in the labs. So as a student you get the best information from the experts themselves!

Bath also prepares us really well in becoming a professional pharmacist with all the help they provide in clinical pharmacy and communication skills. This makes Bath pharmacy graduates really attractive to employers.

I've really enjoyed my time so far at Bath. I find that the lecturers are friendly, approachable and are always there to help. Being part of a small campus university was definitely the right choice for me and having the city centre only minutes away from the campus is a bonus. The pharmacy degree at Bath has a really nice mix of lectures, practicals, workshops and tutorials, which makes the course exciting and different from day to day. ”

Swarupa Dawada

Key facts

- Consistently ranked one of the top Departments in the UK
- 120 places available (MPharm)
- 11 applications per place
- Internationally recognised for Research, highest ranked Department for Pharmacy in the 2001 RAE
- Graded 23/24 in the last review by Quality Assurance Agency
- Excellent record in placing in Pharmacy graduates for Pre-registration places

The placement year

We have a wide range of research links with other academic institutes for the overseas placement option including Europe, North America, and Australia.

Career opportunities

www.bath.ac.uk/careers/destinations/2005/pharmacy.rtf

Programmes

Pharmacy

Master of Pharmacy
B230

Typical offers

A levels: AAB

Including Chemistry (essential) and one other Science/Mathematics subject.

International Baccalaureate:
36 points

3x6 at Higher Level including Chemistry (essential) and one other Science/Mathematics subject.

Irish Leaving Certificate:
560 points

HL Chemistry at grade A1 (essential) and one other HL Science/Mathematics subject at grade A1/A2.

NVQ Level 3 in

Pharmacy Services:

Applicants will need to complete the NVQ Level 3 and 2 Science/Mathematics A2's, Chemistry essential at grade A/B.

Full details on these and other qualifications accepted:

www.bath.ac.uk/pharmacy/

For more information

Admissions Tutors:

Pharmacy

Dr Andy Thompson

Email:

UG.Pharm@bath.ac.uk

Remember to check the Department's admissions pages before you apply.

Pharmacology



Pharmacology programmes

Master of Pharmacology BSc Pharmacology

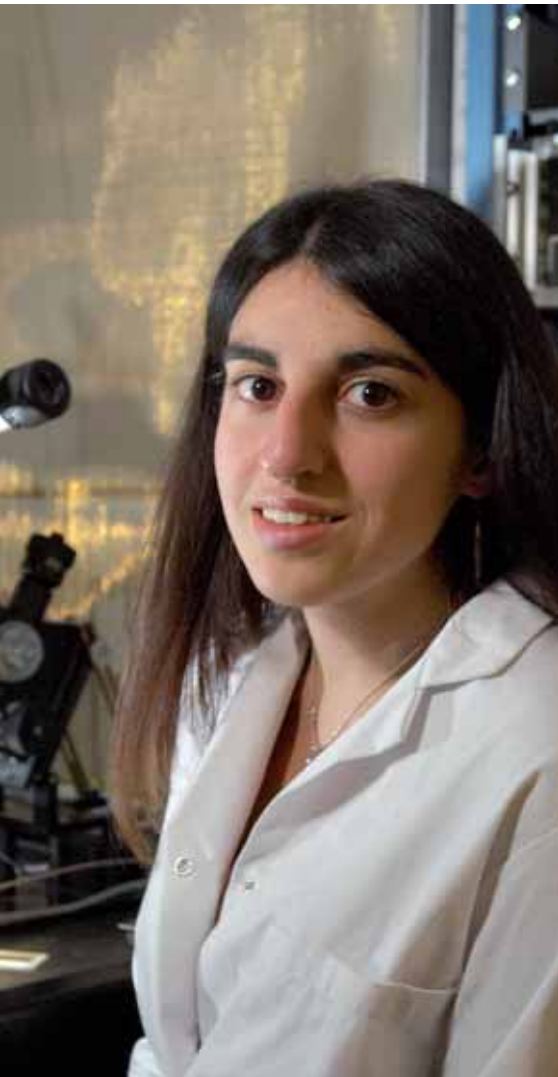
Pharmacology is the study of the interaction of chemical compounds with living tissues. Drugs are those substances which produce an effect while medicines contain drugs formulated for therapeutic use. A pharmacologist is a research scientist involved with the development of new drug treatments and examination of the mechanism of action of existing ones. This has a basis in both chemical and biological sciences. Therefore if you have strong interest in the function of the body and disease and you enjoy practical science, pharmacology is for you.

Degree programmes in Pharmacology

Two degree programmes are offered. Most candidates apply for the 4-year Master of Pharmacology degree with compulsory placement (sandwich) year. A 3-year full-time BSc Pharmacology degree is also available. Entry requirements are the same for both degrees, and transfer between them is possible up to the end of Year 2. The MPharmacol differs from the BSc, not only in the placement year, but also in requiring a higher academic standard in progress examinations and includes more advanced units in specific areas of pharmacology and individual research projects in the final year. Our academic staff have a wide range of research interests, including inflammation, cardiovascular disease, disorders of the central nervous system and cell signalling, and these allow us to offer project choices and teaching expertise across the whole of Pharmacology.

Pharmacology degree structure

	Pharmacology	Molecular & Cell Biology	Medicinal Chemistry	Pharmaceutics	Study & Experimental Skills
Year 1	Pharmacology (Including autonomic endocrine and renal systems)	Molecular Cell Biology	Medicinal Chemistry Spectroscopy	Biopharmaceutics & General Pharmacology	Learning & Study Skills Measurement in Pharmacology
Year 2	Physiology, Pathology and Pharmacology (including cardiovascular and CNS)	Cellular & Molecular Therapeutics	Pharmacology of infection & immunity	Ethics & Experimental Pharmacology Experimental Pharmacology	
Year 3	Industrial placement				
Year 4 Masters	Advanced topics, trends & technologies in pharmacology	Molecular Applications in Pharmacology Recent advances in Drug Discovery	Masters Project		
	Options	Options	Options	Cognitive skills in pharmacology	Communicative skills in pharmacology
Year 4 BSc with placement Year 3 BSc without placement	Advanced topics, trends & technologies in pharmacology	Molecular Applications in Pharmacology Recent advances in Drug Discovery	BSc Project		
	Options	Options	Options	Dissertation	Critical & Communicative skills in pharmacology



“ The University of Bath provides the most hands-on Pharmacology degree in the country, which has enabled me to have a great understanding of how scientific research is carried out and knowledge of techniques which are widely used in academia and industry. The lectures cover a wide variety of topics, which allows you to discover the areas that interest you most thus helping you to make future career choices. My Placement Year at Roche Palo Alto in California was an invaluable first hand experience of the pharmaceutical industry, allowing me to further develop my skills, such as laboratory techniques, team work and presentation. ”

Yvonne Mavrellos-Varney

Key facts

- Consistently ranked one of the top departments in the UK
- 20 places available for MPharmacol/BSc
- 7 applications per place
- Internationally recognised for Research, ranked 5*A in the 2001 Research Assessment Exercise (RAE)
- Graded 23/24 in the last review by Quality Assurance Agency
- Master of Pharmacology includes one year industrial placement

The placement year

Placements are a distinctive feature of the undergraduate programme at Bath which may be studied either as a three-year full-time or a four-year sandwich programme, in which the third year is spent out on industrial placement.

The placement year is organised by the Department and offers a period of invaluable experience in the pharmaceutical industry. During this year, students normally work in the Research & Development laboratories of a major company (e.g. GlaxoSmithKline) in the UK, USA or Europe. As well as being part of a research team, each MPharmacol student undertakes their own project and also submits a dissertation and a series of essays during the year.

Career opportunities

www.bath.ac.uk/careers/destinations/2005/pharmacology.rtf

Programmes

Pharmacology

Master of Pharmacology
B213

BSc Pharmacology
B210

Typical offers

A levels: ABB

Including Chemistry (essential) and one other Science/Mathematics subject.

International Baccalaureate:
34 points

3x6 at Higher Level including Chemistry (essential) and one other Science/Mathematics subject.

Full details on these and other qualifications accepted:

www.bath.ac.uk/pharmacy/

For more information

Admissions Tutor:
Dr Roland Jones

Email:
UG.Pharm@bath.ac.uk

Remember to check the Department's admissions pages before you apply.